



Model F1f Metallic

AIR OPERATED DOUBLE DIAPHRAGM PUMPS

Specifications

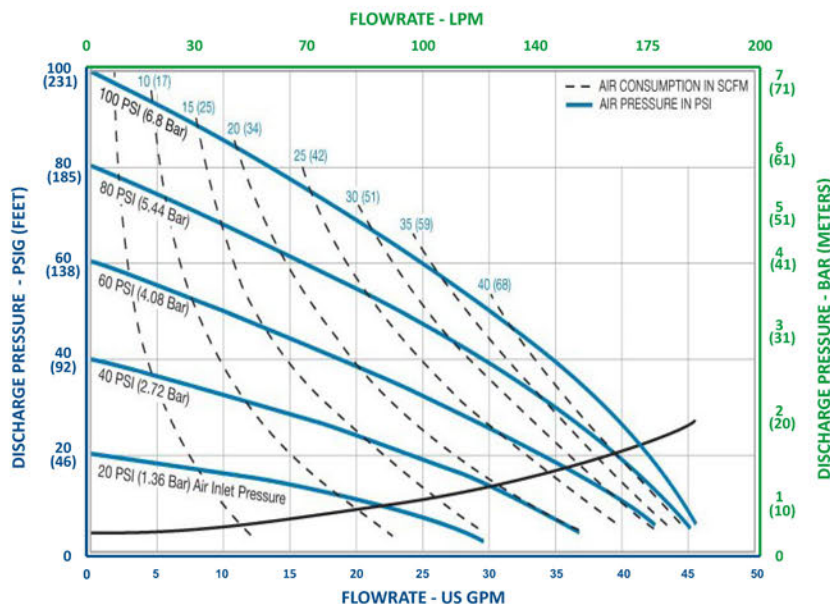
Suction & Discharge Size:	1" x 1"
Porting Location:	Center
Connection Types:	NPT/BSP
Air Inlet:	1/2" FNPT
Porting Location:	Center
Exhaust port:	1" FNPT, optional
Aluminum Shipping Weight :	28 lbs. (13kg)
SS316 Shipping Weight :	43 lbs. (20 kg)

Capabilities

Maximum Flow Rate:	45 gpm (170 lpm)
Maximum Air Supply Pressure:	125 psi (8 bar)
Displacement Per Stroke:	0.11 gal (0.42 lit)
Minimum Air Inlet Pressure:	10 psig (0.7 bar)
Maximum Particle Size :	0.25 in (6 mm)
Operating temperature:	Determined by elastomers



F1F Performance



Note: Full stroke diaphragm allows performance to be equal for all elastomers.

Typical Applications

- Acids & Bases
- Plating Solutions
- Wastewater
- Paints, Inks, Solvents
- Ceramic Slip and Glaze
- Lubricants and Oils

Typical Industries

- Mining
- Paints and Coatings
- Ceramics
- Pulp and Paper
- Electroplating & Anodizing
- Wastewater
- Marine
- Chemical Manufacturing & Distribution
- OEM's

FTA Pumps

27027 Westheimer Pkwy, Katy, TX
Tel: 713 344 1226



Construction

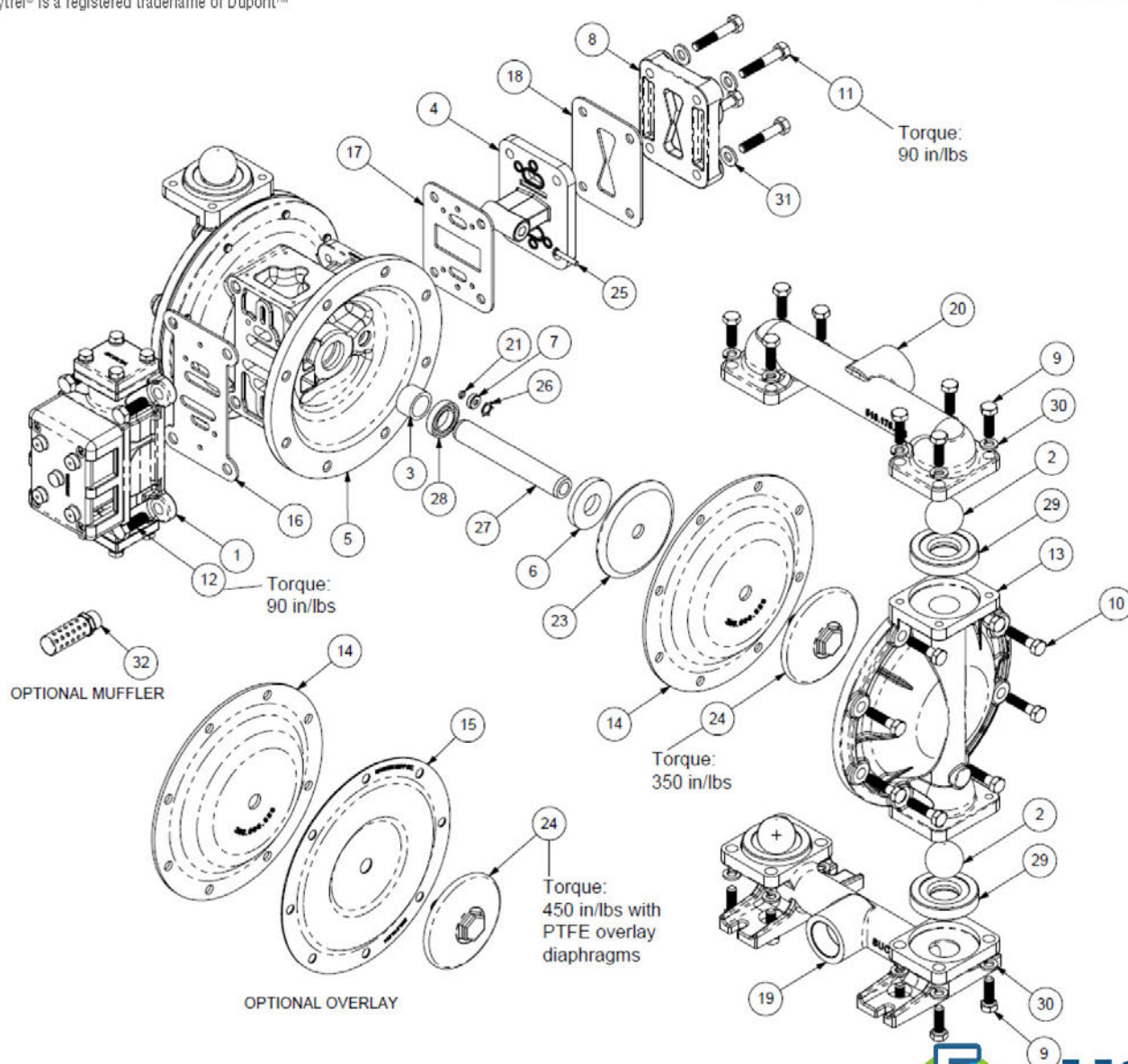
Wetted Materials:	Aluminum/ Stainless Steel
Diaphragm Materials:	Neoprene, Santoprene™, FKM, EPDM, PTFE, Buna, Hytrel®, Polyurethane
Air Valve:	GFRPP, Aluminum
Ball Materials:	Neoprene, Buna, EPDM, FKM, Santoprene™, PTFE
Seat Materials:	Aluminum, 316SS, PTFE, Hytrel, Buna, Neoprene, EPDM, FKM, Santoprene™, Polyurethane
O-ring Materials:	Neoprene, Buna, EPDM, FKM, PTFE, FEP/FKM

Santoprene™ is a registered trademark of Exxon Mobil Corp.
Hytrel® is a registered trademark of Dupont™

THE RIGHT CHOICE

Dimensions

Maximum Height:	12.88 in (327.09 mm)
Maximum Width:	10.25 in (260.35 mm)
Maximum Depth:	9.09 in (230.80 mm)



USA

FTA Pumps

27027 Westheimer Pkwy, Katy, TX
Tel: 713 344 1226

